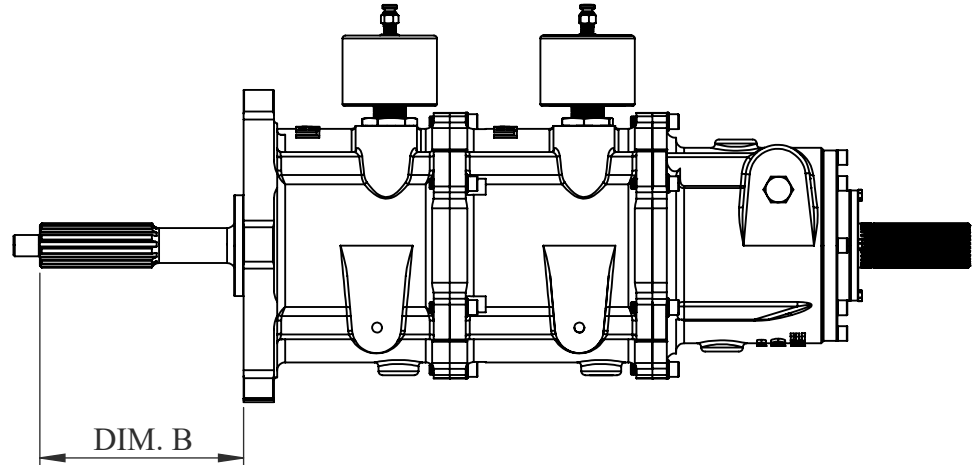
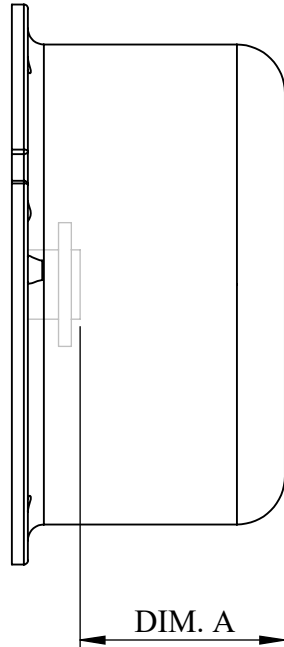


THE INFORMATION CONTAINED IN THIS DRAWING IS THE SOLE PROPERTY OF Lenco RACING TRANSMISSIONS. ANY REPRODUCTION IN PART OR WHOLE WITHOUT THE WRITTEN PERMISSION OF Lenco RACING TRANSMISSIONS IS PROHIBITED.

INPUT SHAFT CLEARANCE



CHECK **DIMENSION A** WITH STEEL RULE OR DIAL CALIPERS. THIS **DIMENSION A** REPRESENTS THE DISTANCE FROM THE OUTSIDE FACE OF THE BELLHOUSING TO THE OUTSIDE FACE OF THE PILOT BEARING ONCE THE PILOT BEARING HAS BEEN INSERTED INTO THE CRANKSHAFT.

INSTALL THE INPUT SHAFT INTO THE TRANSMISSION. MEASURE **DIMENSION B** WHICH IS THE DISTANCE FROM THE FACE OF THE TRANSMISSION TO THE END OF THE CLUTCH DISC SPLINE ON THE INPUT SHAFT (NOTE: DO NOT INCLUDE INPUT SHAFT PILOT LENGTH). **DIMENSION B** MUST BE 0.060" TO 0.090" LESS THAN **DIMENSION A**. IF INPUT SHAFT IS TOO SHORT YOU MAY ADD UP TO 0.100" SHIM BETWEEN PILOT BEARING AND CRANKSHAFT. IF INPUT SHAFT IS TOO LONG YOU MUST MACHINE IT UNTIL PROPER DIMENSIONS ARE ATTAINED.

NOTE: IT IS THE RESPONSABILITY OF THE INSTALLER TO ASSURE PROPER INPUT SHAFT LENGTH. THERE SHOULD BE 0.060" TO 0.090" INPUT SHAFT CLEARANCE WHEN PROPERLY INSTALLED.

CAD GENERATED DRAWING, DO NOT MANUALLY UPDATE	
APPROVALS	DATE
DESIGN BY	
DRAWN BY JON SUMEK	9/28/2007
MODIFIED JON SUMEK	12/21/2019
MFG ENG	
QUAL ENG	

LENCO RACING TRANSMISSIONS
1326 EAST FRANCIS STREET ONTARIO, CA 91761

INPUT SHAFT CLEARANCE DIAGRAM

SIZE A	DWG. NO. INPUT SHAFT CLEARANCE DIAGRAM
SCALE	CAD FILE: SHEET 1 OF 1